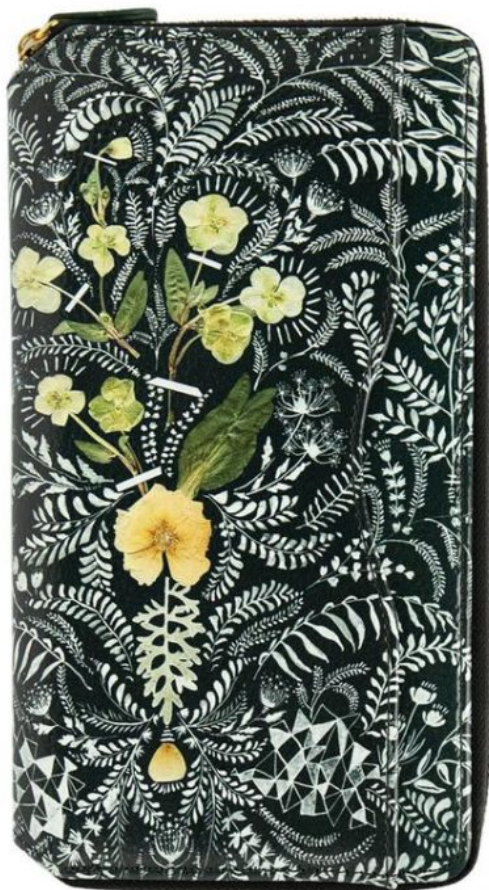


## Papaya Art E2 Fireweed Travel Clutch Wallet 9.25" x 5.25" - Onyx Lace FWPH018



Price: \$ 75.99

**SKU:** 602573137512-FWPH018

**Product Categories:** [Anahata Katkin](#), [Bags and Holders](#), [Car Travel Accessories](#), [Health and Beauty Accessories](#), [Luggage Accessories / Keychains](#), [ORGANIZERS/INVITATIONS/MEMOPAD](#), [Travel Clutches](#)

**Product Page:**

<https://babyfamilygifts.com/shop/by-artist/anahata-katkin/papaya-art-e2-oilcloth-travel-clutch-wallet-9-25-x-5-25-onyx-lace-fwph018>



## Product Description

FIREWEED's Onyx Lace Travel Clutch is our favorite oversized wallet! It is large enough to hold a passport and travel documents but can also store receipts, a cell phone, notes, cash, cards, and change. The unique design features vibrant hand-pressed wildflowers and delicate brushstrokes bringing inspiration and versatility to any event whether it's a night out on the town or a casual purse accessory.

- Crafted with a durable oilcloth-like material - Interior US passport size pocket and two travel document slots - Fully loaded with 11 hand-stitched card slots - Exterior gold zip pocket and additional pouch pocket - Clear ID window - Sturdy all-around zip closure on three sides - Wipe-able linings and exterior - Double-sided with original artwork - Dimensions: 9.25" x "5.25" x 1"

\*Please Note: Pockets are intentionally tight when new and will loosen up with use.

- Available in other sizes. Each size and design is sold separately.



### About Papaya:

PAPAYA! has been creating bold, heart-centered, artwork & collections using a fiercely independent philosophy since 2003. Based in Southern Oregon, USA, PAPAYA! shares an original and undiluted artistic perspective.

PAPAYA! started in a Los Angeles kitchen where mother-daughter team Gina and Anahata Katkin spent their nights hand glittering the first greeting cards designed from Anahata's personal sketchbooks and art journals. (Alongside one naked toddler who was usually covered head to toe in glitter.) The two went on to hand build the company from those 20 greeting cards into what it is today: sharing hundreds of fine lifestyle and stationery offerings that are celebrated across the United States and distributed in over a dozen countries worldwide. Over the years the independently owned family company has remained true to its roots. All of



PAPAYA!'s work is internally generated and the artists are still the heart that drives the company. PAPAYA! products feature original artwork by Anahata and a small team of dedicated in house designers using a special range of paintings, drawings, and mixed media to maintain a beloved, signature aesthetic.

PAPAYA! is proud to be supported by an incredible cast of talented employees, who are not only designers, craftsmen & forward thinkers, but keep the mission of “Creative Abandon” alive and thriving.

## Product Attributes

- Dimensions: 10 &times; 8 &times; 2 in
- Weight: 0.75 lbs
- Brand: Papaya

## Product Gallery





